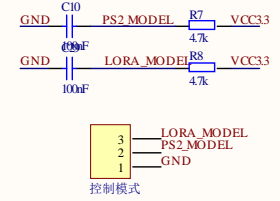
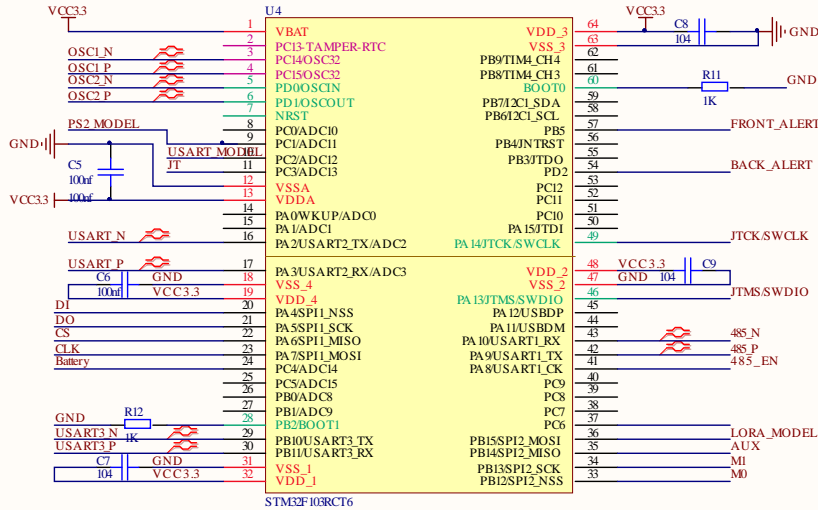
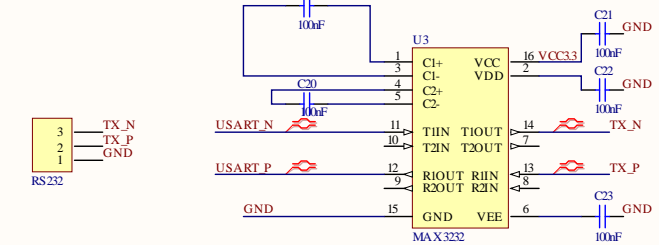
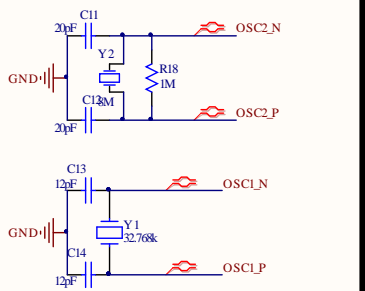


STM32--CPU介绍

STM32F103RCT6 速度: 72MHz
 RAM容量: 48K
 程序存储器容量: 256K
 封装: 64LQFP

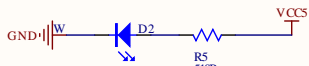


控制方式选择

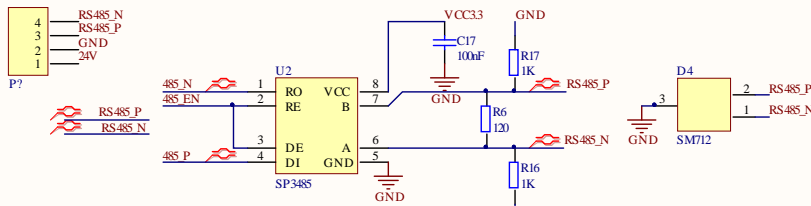


RS232 串口通信

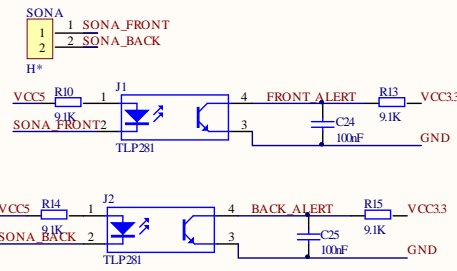
电源指示



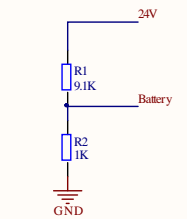
电源指示



RS485通信



声波接近信号输入



电池电量估计

Title		
Size	Number	Revision
A3		
Date:	2024/24	Sheet of
File:	C:\Users\Administrator\Desktop\控制板_SchDoc	Drawn By: